

BUN WARMER

Instruction Manual


Models: 8018, 8019, 8117, 8219, 8170





 **GOLD MEDAL**[®]
FUNFOOD EQUIPMENT & SUPPLIES


Cincinnati, OH 45241-4807 USA

SAFETY PRECAUTIONS


	⚠ DANGER
	Machine must be properly grounded to prevent electrical shock. Do NOT immerse this unit in water. Do not use excessive water when cleaning. Always unplug the equipment before cleaning, or servicing.

	⚠ WARNING
	Any alterations to this equipment will void the warranty and may cause a dangerous situation. NEVER make alterations to the equipment. Make sure all machine switches are in the OFF position before plugging the equipment into a receptacle.

	⚠ WARNING
	Adequate eye protection must be used when servicing this equipment to prevent the possibility of injury.

	⚠ WARNING
	NEVER put your fingers or any object into the heating area. We do NOT assume any liability for injury due to careless handling or operation of this equipment.

	⚠ CAUTION
	This equipment is designed and sold for commercial use only. This equipment is not to be used by the consumer in home use. Do not allow direct contact of this equipment by the public when used in food service locations. Only personnel trained and experienced in the equipment operation may operate this equipment. Carefully read all installation instructions before operating the equipment.

	⚠ CAUTION
	This machine is NOT to be operated by minors. Minors are classified as anyone under the age of 18.

NOTE

The information, specifications and illustrations contained in this manual represent the latest data available at time of publication. Right is reserved to make changes as required at the discretion of Gold Medal Products Company without notice.

INSTALLATION INSTRUCTIONS

Checking Shipment

Unpack carton and check thoroughly for any damage, which may have occurred during transit. Damage claims should be filed immediately with the transportation company. Remove all tape from the outside, and inside of the machine.

Electrical Requirements

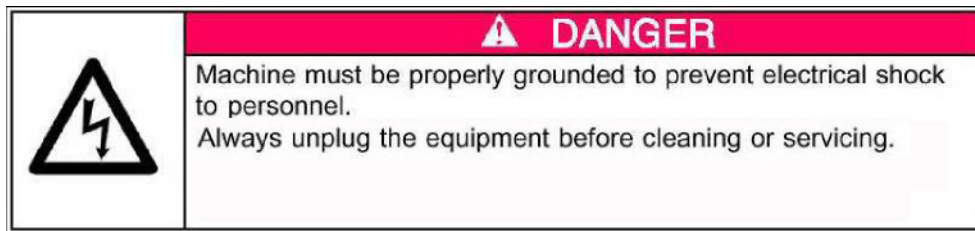
Your Gold Medal Bun Warmer is designed to operate on a 120 Volt / 15 Amp / single-phase outlet. Make sure the warmer is on a dedicated line, and that no other appliances are on the same circuit.

OPERATING INSTRUCTIONS

1. Place the bun warmer on a solid, level surface.
2. Plug warmer into an appropriate outlet, following the guidelines set forth above in “Electrical Requirements.”
3. Open front drawer and remove the false bottom, and carefully set it aside.
4. Pour enough water into the drawer pan insert to cover the bottom. Approximately 1/8” deep. (This provides the humidity to keep the hot dog buns from drying out as they are heated. 5. Replace false bottom, then close the drawer.
6. Turn the temperature dial to 140-160 degrees and allow the unit to preheat for 15-20 minutes.
7. Place desired amount of hot dog buns onto false bottom.

Note: Check for water periodically to ensure proper humidity. The machines water consumption varies with temperature setting, machine usage, etc. Empty water from drawer, and clean nightly to prevent product contamination. If machine runs out of water, the hot dog buns will become hard and dried out.

CLEANING INSTRUCTIONS



1. Unplug the unit before cleaning or servicing.
2. Open drawer. When drawer is fully open, locate drawer release levers on both sides of the back of the drawer.
3. Push down on both levers simultaneously and pull drawer completely out of the unit.
4. Remove Drawer pan and false bottom, and wipe down all components using a clean, soft cloth.
5. When dry, clean all stainless steel surfaces (drawer, drawer pan, false bottom, cabinet, etc.) with a high quality concession cleaner such as Gold Medal's - **Watch Dog Concession Equipment Cleaner**, item #2580.
6. Re-assemble drawer components using the above steps for a reference.

ORDERING SPARE PARTS

1. Identify the desired part by checking it against the photos, illustrations, and/or the parts list.
2. When ordering, please include part number, part name, and quantity desired.
3. Please include your model name and machine serial number (located on the machine nameplate) with your order.
4. Address all parts orders to:

Parts Department
Gold Medal Products Co.
10700 Medallion Drive
Cincinnati, Ohio 45241-4807

or, place orders at:

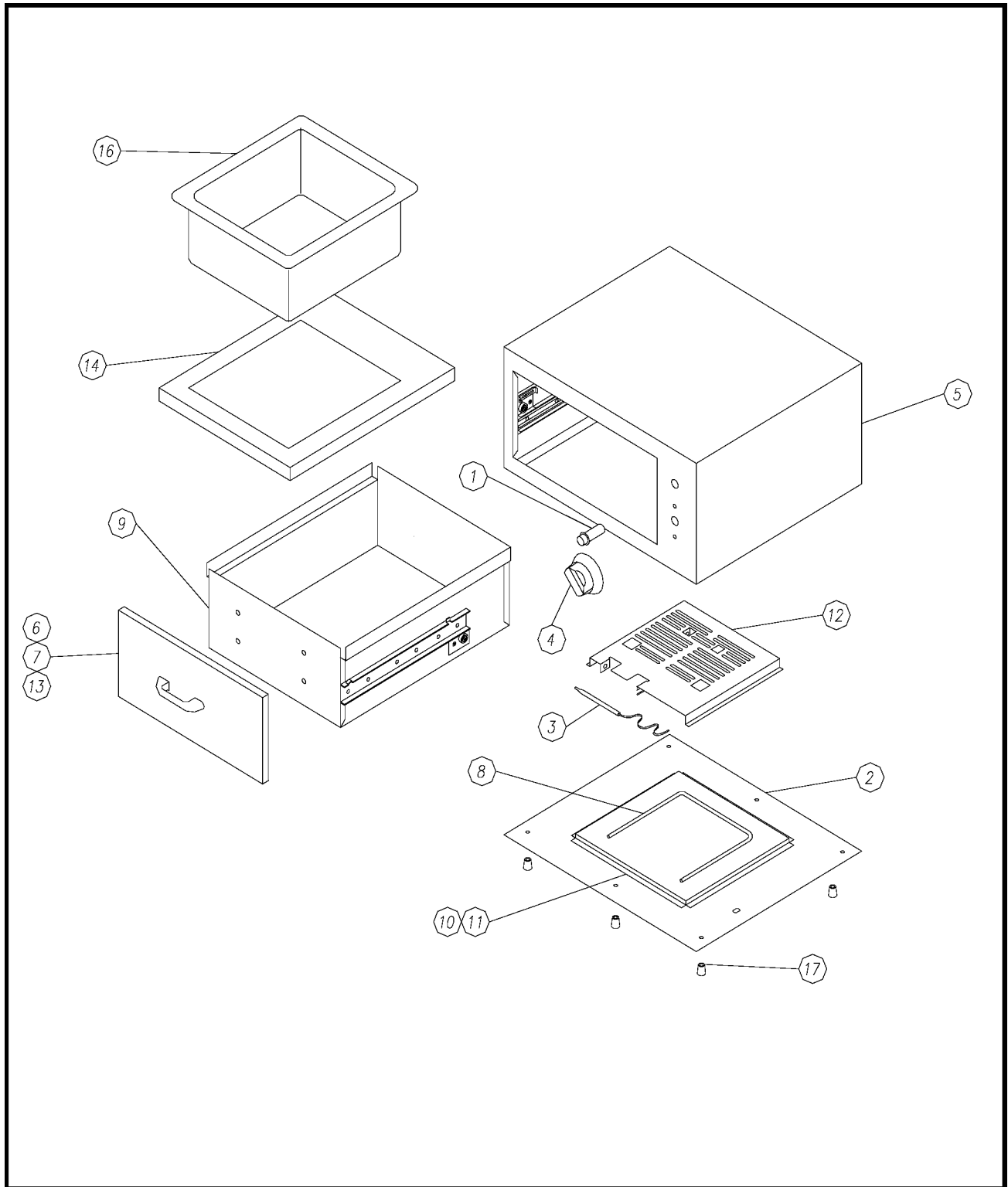
(800) 543-0862

Fax: (800) 542-1496

[E-mail: info@gmpopcorn.com](mailto:info@gmpopcorn.com)

www.gmpopcorn.com

BUN WARMER ASSEMBLY

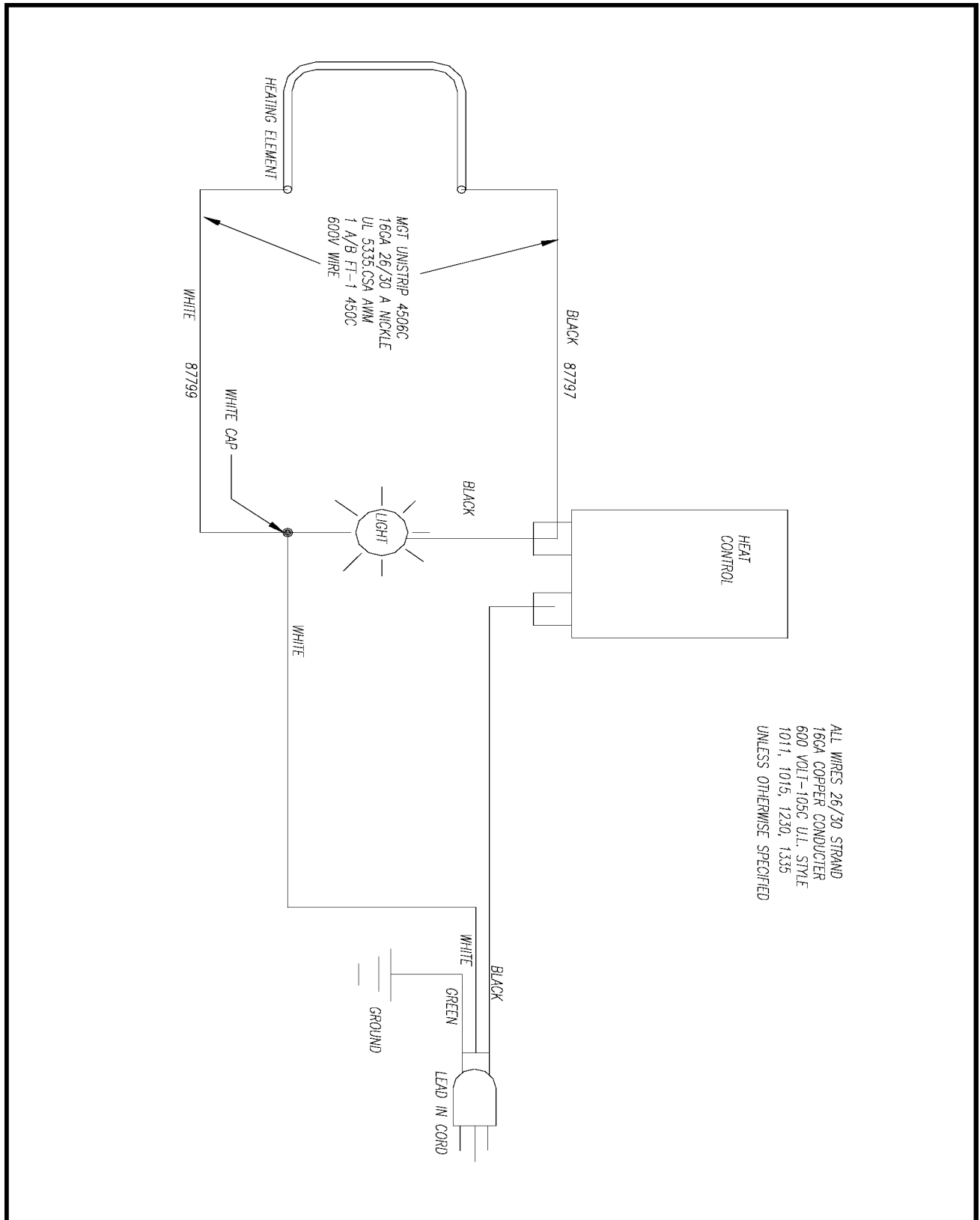


PARTS LIST – BUN WARMERS

Item #			Model #			Description
	8018	8019	8117	8219	8170	
1	41033	41033	41033	41033	41033	Pilot Light, 125V - Red
2	87779	87523	87767	88393	88410	Bottom Cover
3	87429	87429	87429	87429	87429	Heat Control
4	87430	87430	87430	87430	87430	Knob, Heat Control
5	87788	87706	87776	88394	88415	Body Weldment
6	87781	87703	87769	87703	88413	Drawer Front Weldment
7	87420	87420	87420	87420	87420	Drawer Handle
8	87428	87428	87428	87428	87428	120V / 300W Heat Element
9	87923	87925	87929	87925	88430	Drawer Weldment
10	87789	87742	87777	87742	88425	Insulation Mat
11	87784	87741	87772	87741	88428	Insulation Pan
12	87763	87763	87763	87763	88437	Element Bracket / Retainer
13	87783	87526	87771	87526	88411	Drawer Rear
14	87778	87527	87766	87527	88412	Cover Panel
15	87527	87522	87522	88382	88409	End Cover
16	87921	87921	87927	87921	88438	Drawer Pan
17	47328	47328	47328	47328	47328	Glide

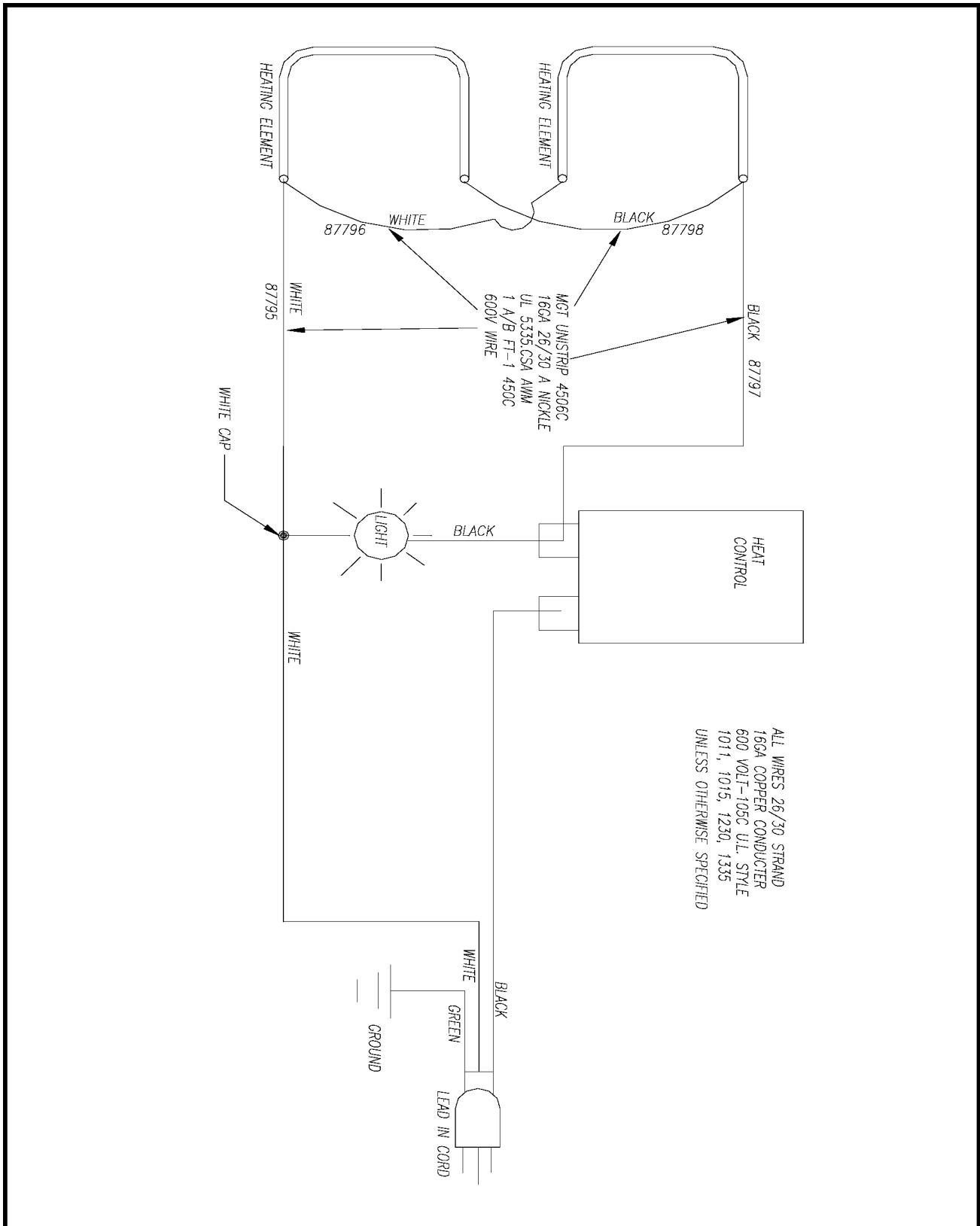
ELECTRICAL SCHEMATIC

Models: 8018, 8117, 8170



ELECTRICAL SCHEMATIC

Models: 8019, 8219



WARRANTY

WE WARRANT to the original purchaser the Gold Medal equipment sold by us to be free from defects in material or workmanship under normal use and service. Our obligation under this warranty shall be limited to the repair or replacement of any defective part for a period of six (6) months from the date of sale to the Original Purchaser with regard to labor and two (2) years with regard to parts and does not cover damage to the equipment caused by accident, alteration, improper use, voltage, abuse, or failure to follow instructions.

THIS WARRANTY IS IN LIEU OF ALL OTHER WARRANTIES EXPRESSED OR IMPLIED, AND OF ALL OTHER OBLIGATIONS OR LIABILITIES ON OUR PART, INCLUDING THE IMPLIED WARRANTY OF MERCHANTABILITY. THERE ARE NO WARRANTIES WHICH EXTEND BEYOND THE DESCRIPTION ON THE FACE HEREOF. We neither assume, nor authorize any other person to assume for us, any other obligation or liability in connection with the sale of said GOLD MEDAL equipment or any part thereof.

The term "Original Purchaser" as used in this warranty shall be deemed to mean that person, firm, association, or corporation who was billed by the GOLD MEDAL PRODUCTS COMPANY, or their authorized distributor for the equipment.

THIS WARRANTY HAS NO EFFECT AND IS VOID UNLESS THE ORIGINAL PURCHASER FIRST CALLS GOLD MEDAL PRODUCTS COMPANY AT 1-800543-0862 TO DISCUSS WITH OUR SERVICE REPRESENTATIVE THE EQUIPMENT PROBLEM, AND, IF NECESSARY, FOR INSTRUCTIONS CONCERNING THE REPAIR OR REPLACEMENT OF PARTS.

NOTE: This equipment is manufactured and sold for commercial use only.

GOLD MEDAL PRODUCTS COMPANY 10700 Medallion Drive

Cincinnati, Ohio 45241-4807 USA

www.gmpopcorn.com

Phone: 1-800-543-0862

Fax: 1-800-542-1496

