

Adjusting or Replacing Cutting Blades

1. Locate the two set screws in the collar of the cutting head (see figure 1) by reaching in through the horn (see figure 2) and rotating the head until the set screws are on the bottom. (**Caution:** be careful of the sharp blades). You will need to look up through the chute in the cabinet of the machine to see the screws. (see Figure 3)



Figure 1

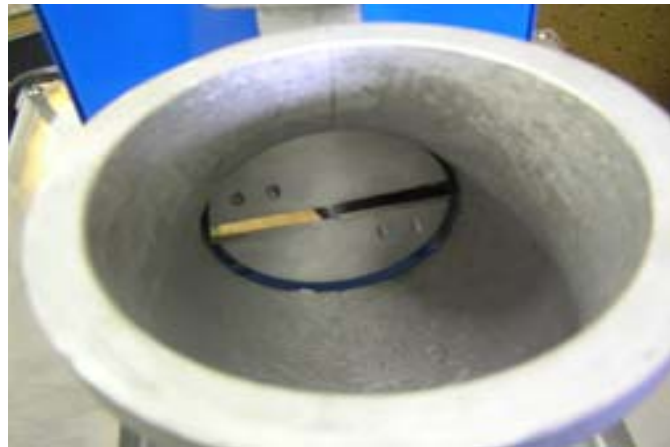


Figure 2 – View through Horn



Figure 3 – View through Chute from inside of machine looking up

2. Loosen the two screws by reaching up through the chute from inside of the machine (**Note:** some models require a 3mm hex wrench and others require a screwdriver).
3. You will now be able to slide the cutting head out through the horn opening.
4. Adjust the blades by loosening the two screws on each blade and sliding the blade up or down to the desired depth and re-tightening the screws. The more blade that is exposed beyond the head will create a coarser ice chip. (see Figures 4 & 5)



Figure 4 – Fine Setting



Figure 5 – Coarse Setting

5. Re-install the cutting head onto the motor shaft by sliding it in through the horn opening on the top of the machine.
6. It is **IMPORTANT** that these screws tighten on the flat part of the shaft to insure that they will not come loose. (see figure 6). Make certain that the head is on the shaft as far as it will go and tighten the two screws.



Figure 6 – Motor Shaft